

INSTALLATION AND OPERATING INSTRUCTIONS FOR LED EMERGENCY DOWN LIGHT

Model No. : EMDS3



Approvals

This product is designed to conform to relevant standards, IEC60598-1, IEC60598-2-22, EN61347-1, EN61347-2-13, EN61347-2-7, EN61000-3-2, EN61000-3-3, EN 62471, EN62493, EN55015.

Specification

Power Supply	: 220-240VAC, 50/60 Hz	Operation	: Maintained and Non maintained
Power Consumption	: Max. 5W	IP Rating	: IP20
Ta	: 0°C...+25°C	Function	: Manual test and AUTO test
luminaire Class	: Class II	Lumen output	: 150lm (CREE XT-E)

Precautions

This product should be installed by a registered electrician in accordance with local standards and electrical regulations. Take care to ensure the mains supply is isolated before installation.

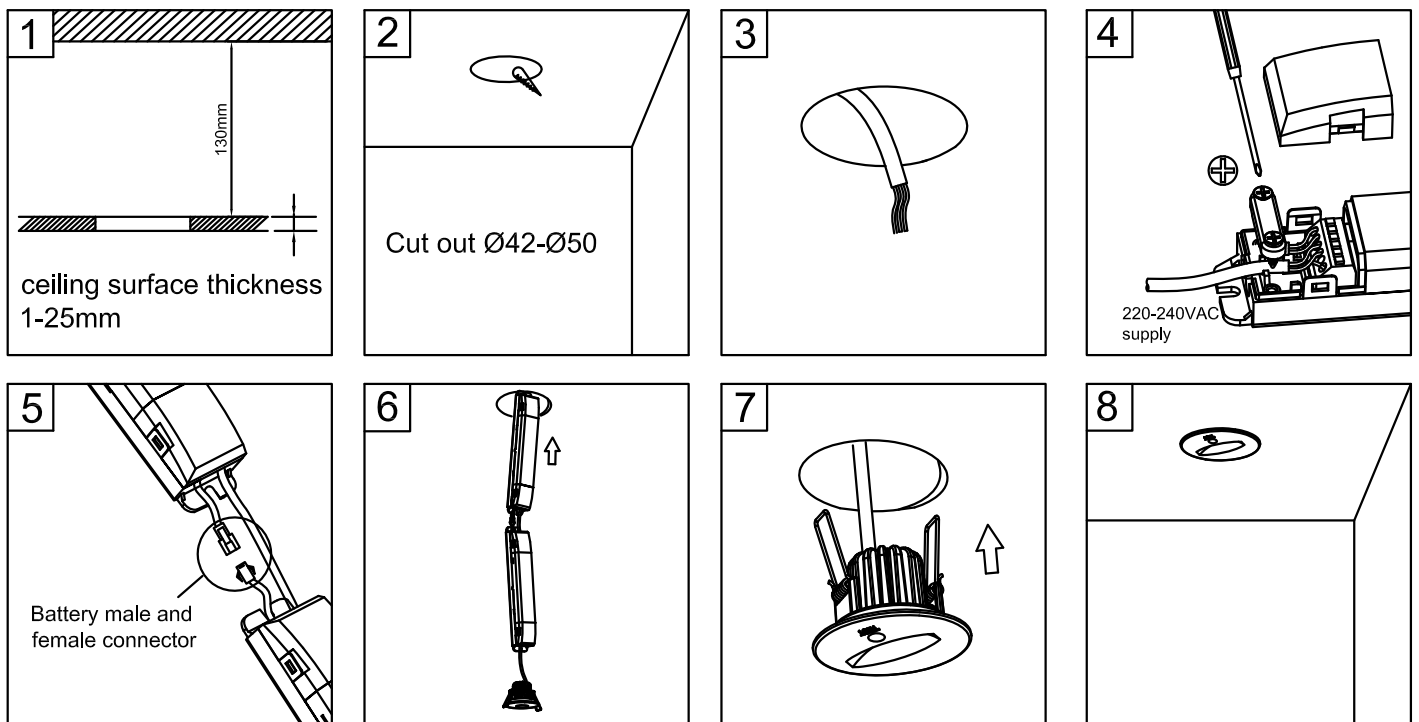
Service & Operation

Normal Operation: The green indicator light on face plate stays on. The LED will go out if the mains supply fails, the internal charger malfunctions, or the unit in test mode.

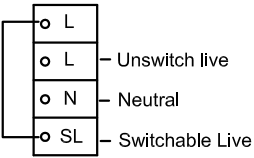
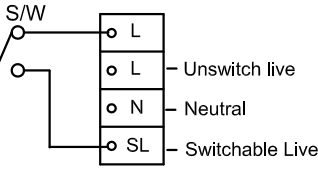
Battery: Sealed Ni-Cad or Ni-Mh rechargeable battery pack. Battery should be replaced when the required duration is no longer achieved. To avoid any damage to the fixture and ensure its performance, the battery should be replaced with same brand and type.

Test Switch: Press the test switch button, LED indicator will go out and the sign will be illuminate from its battery pack.

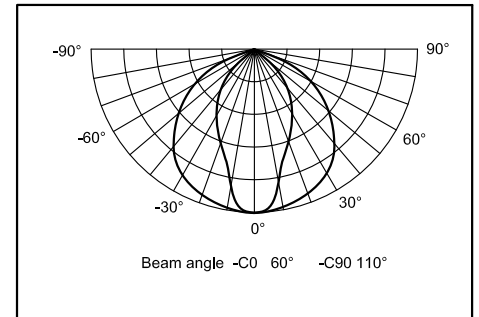
Installation



Wiring Instruction

<p>Maintained or Non-Maintained wiring</p>  <p>Maintained (default operation): Connect L,N and leave jumper cable connected.</p> <p>Non-maintained: Connect L,N and remove jumper cable.</p>	<p>ACEM wiring (switchable maintained)</p>  <p>Connect L,N and remove jumper cable and connect switched line between SL and L terminal.</p>
---	--

Lighting Distribution



Mounting Spacing

Compliant EUROPE standard EN1838 Illuminance requirement: Escape route up to 2 m wide, 1 lx on the central axis and 0.5 lx at 50% of the width.	Mounting Height (m)	Spacing (C0)	Spacing (C90)
	2.5	7.0 m	10.0 m
	3.0	8.0 m	11.6 m
	3.5	8.4 m	12.6 m

Compliant Australian standard AS2293.1;AS2293.3 Illuminance classification: C0:A80 C90:C80 Horizontal illuminance at floor level is not less than 0.2 lx.	Mounting Height (m)	Spacing (C0)	Spacing (C90)
	2.7	11.4 m	13.6 m
	3.0	12.0 m	14.8 m
	3.6	12.4 m	16.6 m

Technical Information

Model Number	Input Voltage	Charge Duration	Discharge Duration	Battery	Power Consumption	LED	Lumen output
EMDS3/1H/MT(AT)/CD	220-240V~ 50/60Hz	24h	1 h	Ni-Cd,7.2V 0.6Ah	4.5W	CREE XT-E	150 lm
EMDS3/1H/MT(AT)/MH	220-240V~ 50/60Hz	24h	1 h	Ni-Mh,7.2V 0.6Ah	4.5W	CREE XT-E	150 lm
EMDS3/2H/MT(AT)/MH	220-240V~ 50/60Hz	16h	2 h	Ni-Mh,7.2V 1.2Ah	4.5W	CREE XT-E	150 lm
EMDS3/3H/MT(AT)/MH	220-240V~ 50/60Hz	24h	3 h	Ni-Mh,7.2V 1.2Ah	4.5W	CREE XT-E	150 lm

INSTRUCTIONS FOR AUTO TEST

1. **Install luminaire according to installation instruction sheet**
2. **Once the unit is powered up it will automatically initiate a self test and diagnostics as follows:**

- Every month : Performs a 3 minute duration test
- Every year : Performs a 1 Hour or 3 Hour duration test

All test functions are factory preset and do not need field adjustment

3. **Dual color indicator LED status Meanings**

- Green Solid On Ready / Normal Operation
 Flashing Testing
- Red Requires Service

●	One flash, 4 second pause	Battery is not connected
● ●	Two flashes, 4 second pause	Battery short or low battery voltage
● ● ●	Three flashes, 4 second pause	Charger board circuit fault
● ● ● ●	Four flashes, 4 second pause	Transformer power fault

NOTE

After repairing a service fault, press and hold the test button for 2 seconds to reset the flashing indicator light to green

4. **Manual Testing**

Press test button once	30 seconds duration test
Press test button twice within 2 seconds	3 minutes duration test
Press test button 3 times within 2 seconds	30 minutes duration test
Press test button 4 times within 2 seconds	1 or 3 hours duration test