

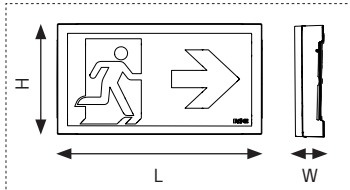
FlexiTech EXIT WALL CG-S



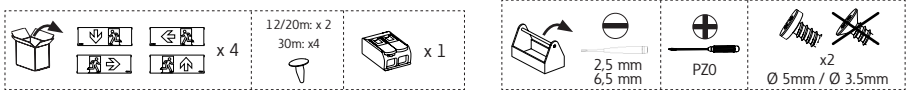
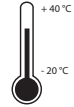
Target group: Skilled electricians
Zielgruppe: Elektrofachkraft



Intended application: Emergency lighting, not suitable for private use.
Verwendungszweck: Notbeleuchtung, nicht für privaten Gebrauch.



	12m	20m	30m
L	231mm	231mm	326mm
H	86mm	125mm	178mm
W	34mm	34mm	38mm



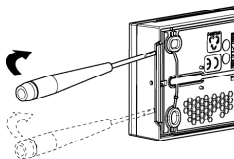
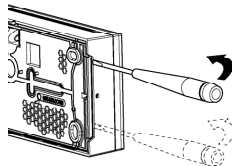
For working on the installation, please ensure first the emergency lighting system is blocked, the battery operation is interrupted, and the mains is OFF.

Stellen Sie bei Arbeiten an der Installation sicher, dass zuerst das Notbeleuchtungssystem blockiert, der Batteriebetrieb unterbrochen und das Stromnetz ausgeschaltet ist.

1

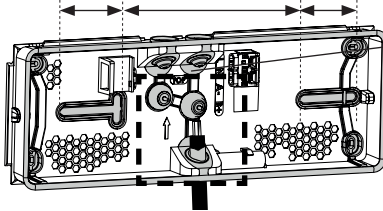
a

6.5 mm

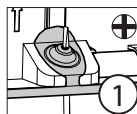


b

12M	37 mm	112 mm	33 mm
20M	37 mm	89 mm	37 mm
30M	46 mm	91 mm	44 mm

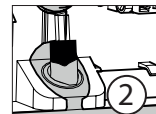


In order to ensure proper aging of the product, use one of the framed cable entries.
Verwenden Sie eine der gerahmten Kabeleinführungen, um eine ordnungsgemäße Alterung des Produkts zu gewährleisten.



Break a cable entry by using a screwdriver.

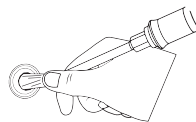
Leitungseinführung mit einem Schraubendreher öffnen.



Rigid or flexible wire

Starrs oder flexibles Leitungs

6 mm < Ø < 13,5 mm

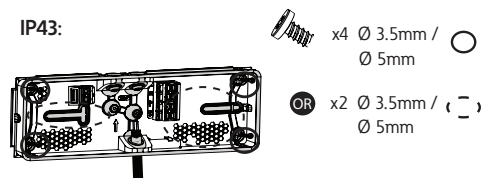
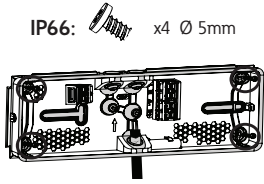


EATON

Powering Business Worldwide




C




2

 2.5 mm


$S < 1,5 \text{ mm}^2$



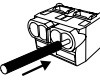
Use screwdriver to place and remove wire
Stecken und Entfernen der Leitungen mittels Schraubendreher




$1,5 < S < 2,5 \text{ mm}^2$

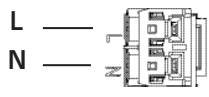


No screwdriver required for connection
Stecken der Leitung ohne Schraubendreher möglich

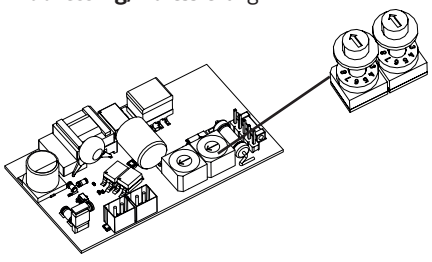



min. 8 mm

220-240V AC - 50/60 Hz
176-275V DC

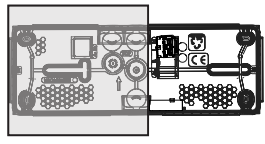
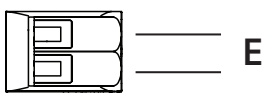


Addressing/Adressierung


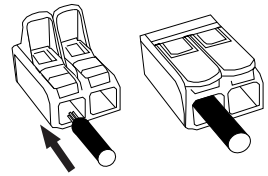


		0 + 0 = No address (without CG-S monitoring)/ Keine Adresse (ohne CG-S Überwachung)
		0 + 1 = 1
		0 + 9 = 9
		1 + 0 = 10
		1 + 1 = 11
		2 + 0 = 20
Max. 20		

Optional 

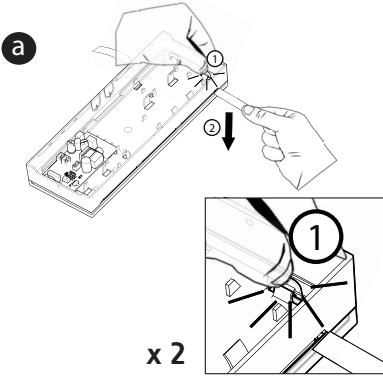


$0,5 < S < 2,5 \text{ mm}^2$

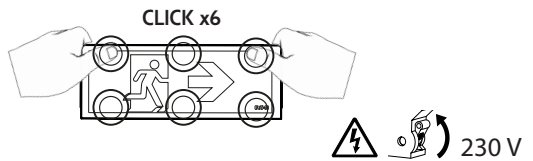
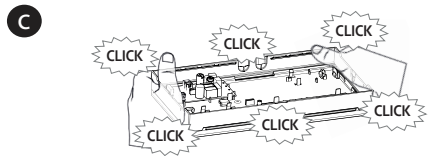
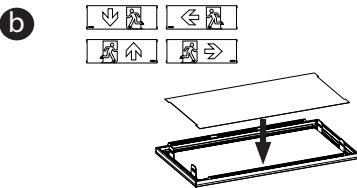
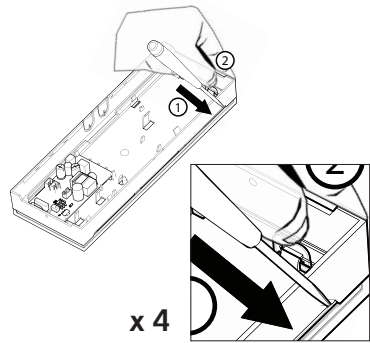



3

PICTOGRAM CONFIGURATION PIKTOGRAMM-KONFIGURATION

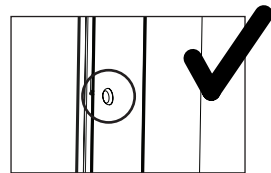
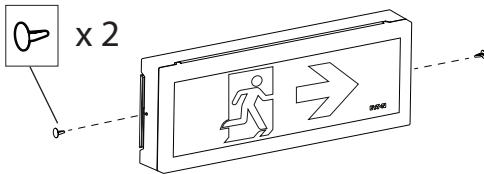


OR

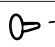


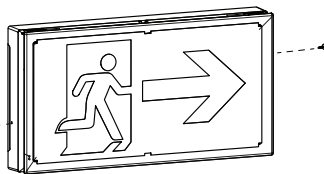
4

12m

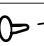


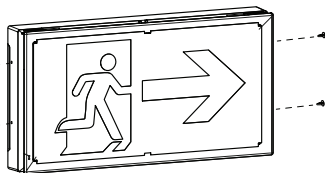
20m





x 2 



30m

x 4 



  **Power consumption mains operation**
(apparent/effective power)
Anschlussleistung Netzbetrieb
(Scheinleistung / Wirkleistung)   **EN**

FT1EW4ICGS	12m	220-240Vac, 50/60Hz, 176-275Vdc	3VA /1W	IP43 / IK07	16 x LED 3V 100mA	EN60598.1 EN 60598.2.22 EN1838/ISO30061
FT1EW4ICGSIP	12m		3VA /1W	IP66 / IK07	16 x LED 3V 100mA	
FT2EW4ICGS	20m		3.5VA /1.4W	IP43 / IK07	16 x LED 3V 180mA	
FT2EW4ICGSIP	20m		3.5VA /1.4W	IP66 / IK07	16 x LED 3V 180mA	
FT3EW4ICGS	30m		4.6VA /2.1W	IP43 / IK07	24 x LED 3V 360mA	
FT3EW4ICGSIP	30m		4.6VA /2.1W	IP66 / IK07	24 x LED 3V 360mA	



Not replaceable
Nicht austauschbar

When the life time of light source is over, replace the luminaire.
Wenn das Lebensdauerende der Lichtquelle erreicht wurde, ersetzen Sie die Leuchte.

Eaton
Cooper Sécurité SAS
PEE II - Rue Beethoven - BP10184
63204 RIOM CEDEX FRANCE
Tél. +33 (0)825 826 212 (0,15 € TTC/min)
www.cooperfrance.com
www.eaton.com

Eaton
EMEA Headquarters
Route de la Longeraie 7
1110 Morges, Switzerland
Eaton.eu

© 2022 Eaton
All Rights Reserved



WEEE: Contact your local dealer

Eaton.com/recycling

EATON

Powering Business Worldwide

ZNO2058300 B- 04/2022

Eaton is a registered trademark.

All trademarks are property of their respective owners.

