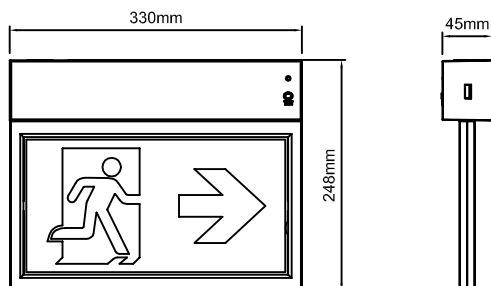


# INSTALLATION INSTRUCTIONS FOR LED EXIT SIGN

Model No.:ESA10



## Product Feature

Power Supply	: 220-240VAC, 50/60 Hz	Emergency Duration	: 1 Hour / 3 Hours
Power Consumption	: Max. 3.5W	Protection Class	: II
Ambient temperature	: -5°C...+45°C	IP Rating	: IP20
Charge Time	: 24 Hours	Function	: AUTO test and Manual test
Operation	: Maintained and Non maintained	Installation	: Wall mount or Ceiling mount
		Viewing distance	: 30m

## Precautions

This product should be installed by a registered electrician in accordance with local standards and electrical regulations. Take care to ensure the mains supply is isolated before installation.

## Service & Operation

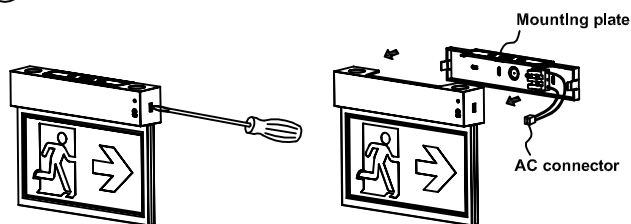
**Normal Operation:** The green indicator light on the front of the unit stays on. The indicator will go out if the mains supply fails, the internal charger malfunctions, or the unit in test mode.

**Battery:** Sealed Ni-Cad or Ni-Mh rechargeable battery pack. Battery should be replaced when the required duration is no longer achieved. To avoid any damage to the fixture and ensure its performance, the battery should be replaced with same brand and type.

**Test Switch:** Press the test switch button, LED indicator will go out and the sign will be illuminate from its battery pack.

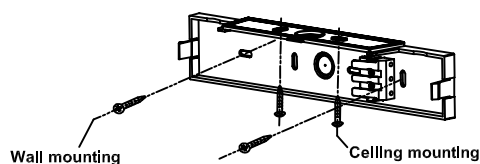
## Mounting Instructions

### ① Dispart mounting plate



- Insert flat screwdriver into slot on side of unit, pry off and remove the mounting plate from unit.
- Disconnect AC connector from PCB.

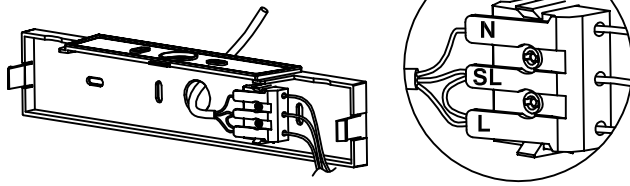
### ② Wall mounting or Ceiling mounting



- Knock out appropriate center cable entry hole and mounting screw hole on the mounting plate.
- Route AC supply wire through center hole of mounting plate.
- Fix mounting plate on the mount surface with screws and anchor nuts.

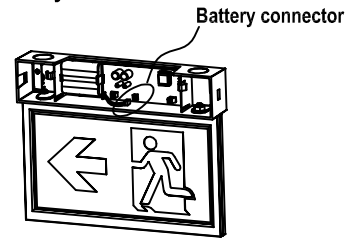
**3 Wiring connection**

Suitable cable 0.75-2.5mm<sup>2</sup>



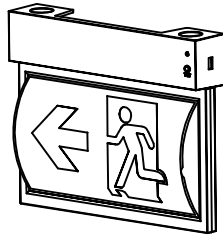
Connect the AC supply wire to terminal block. Refer to wiring instruction showed below.

**4 Connect battery**



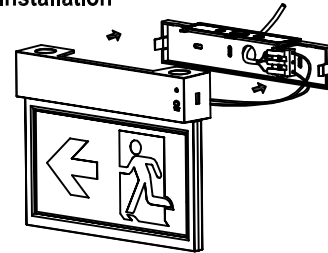
Connect battery male and female connector inside of mounting bracket.

**5 Change pictogram when necessary**



Remove the pictogram on the unit, select other pictogram you need then insert into slot of panel.

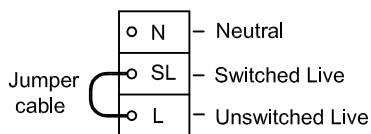
**6 Finish installation**



Snap AC supply on PCBA and then snap fixture to mounting plate.

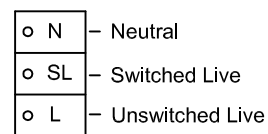
**Wiring Instructions**

**Maintained Wiring**



Maintained (default operation):  
Connect L,N and leave jumper cable connected.

**Non-Maintained Wiring**



Non-maintained:  
Connect L,N and remove jumper cable.

**Pictogram Styles**

LUPG31



LUPG32



LUPG33

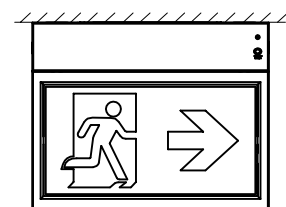


**Mounting Options**

Wall mounting



Ceiling mounting



**Technical Information**

Model Number	Input Voltage	Charge Duration	Discharge Duration	Battery	Power Consumption	LEDs
ESA10/1H/MT(AT)	220-240V~ 50/60Hz	24h	1 h	Ni-cad or Ni-Mh 3.6V 0.6Ah	3.5W Max.	SMD 2835 14 pcs
ESA10/3H/MT(AT)	220-240V~ 50/60Hz	24h	3 h	Ni-cad or Ni-Mh 3.6V 0.9Ah	3.5W Max.	SMD 2835 14 pcs
ESA10/3H/DA	220-240V~ 50/60Hz	24h	3 h	Ni-Mh 3.6V 2.0Ah	3.5W Max.	SMD 2835 14 pcs

## INSTRUCTIONS FOR AUTOMATIC TEST OPTION

(EXIT LIGHT SELF DIAGNOSTICS/SELF TEST FUNCTION)

1. Install LED exit sign according to installation instruction sheet
2. Once the unit is powered up it will automatically initiate a self test and diagnostics as follows:

- Every 4 seconds : Checks for battery disconnection, charger board fault, lamp failure and transformer failure
- Every month : Performs a 3 minute duration test
- Every year : Performs a 1 Hour or 3 Hour duration test

All test functions are factory preset and do not need field adjustment

### 3. Dual Colour Indicator LED Status Meanings

- Green      Solid On      Ready / Normal Operation  
                Flashing      Testing
- Red          Requires Service

•	One flash, 4 second pause	Battery not connected
••	Two flashes, 4 second pause	Battery short or low battery voltage
•••	Three flashes, 4 second pause	Charger board fault
••••	Four flashes, 4 second pause	Transformer fault
•••••	Five flashes, 4 second pause	LED lamp fault

#### NOTE

After repairing a service fault, press and hold the test button for 2 seconds to reset the flashing indicator light to green

### 4. Manual Testing

Press test button once	30 second duration test
Press test button twice within 2 seconds	3 minute duration test
Press test button 3 times within 2 seconds	30 minutes duration test
Press test button 4 times within 2 seconds	1 or 3 hours duration test